

Bee

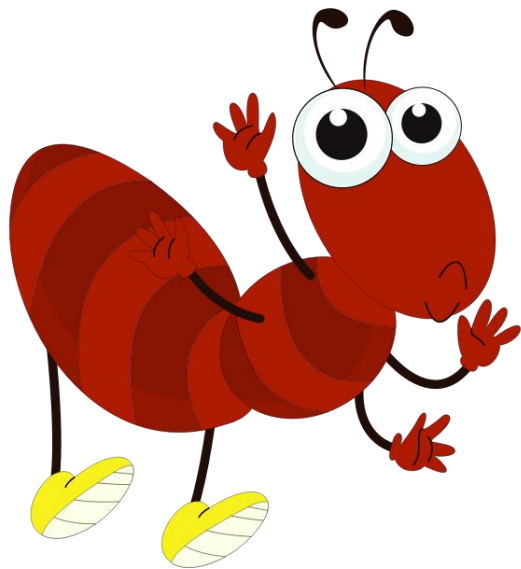
this	bee	can	like	help
------	-----	-----	------	------



This is a bee. It can fly. The bee likes flowers. It makes honey. Bees help plants grow.

Ant

ant	very	walk	line	work
-----	------	------	------	------



This is an ant. It is very small. Ants walk in a line. They look for food. Ants work together.

Lady Bug

is

lady

and

fly

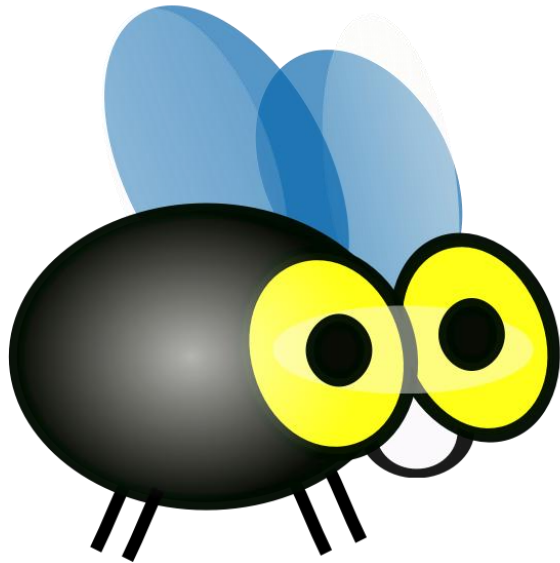
can



This is a lady bug. It is red and small. It can fly. It stays on plants. Lady bugs help plants.

Fly

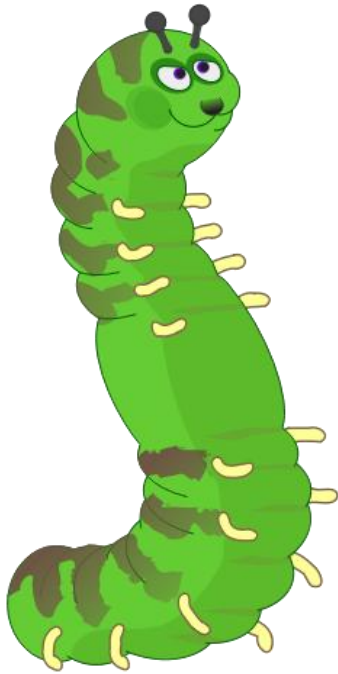
fast	can	home	wings	see
------	-----	------	-------	-----



**This is a fly. It can
fly fast. It has wings.
Flies buzz around.
We see flies at
home.**

Caterpillar

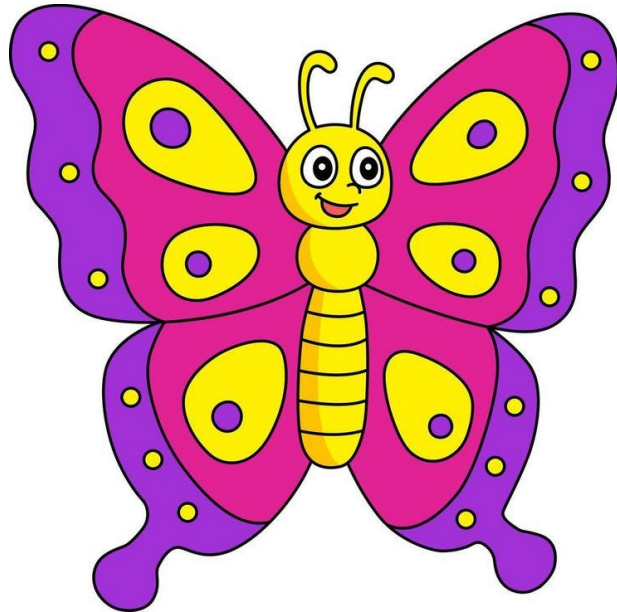
long	small	eats	slowly	will
------	-------	------	--------	------



**This is a caterpillar.
It is long and small.
It eats leaves. It
moves slowly. It will
be a butterfly.**

Butterfly

big	fly	high	are	likes
-----	-----	------	-----	-------



This is a butterfly. It has big wings. It can fly high. It likes flowers. Butterflies are colorful.